



RET
RUSSELL EDUCATION TRUST



King's
School

Sixth Form

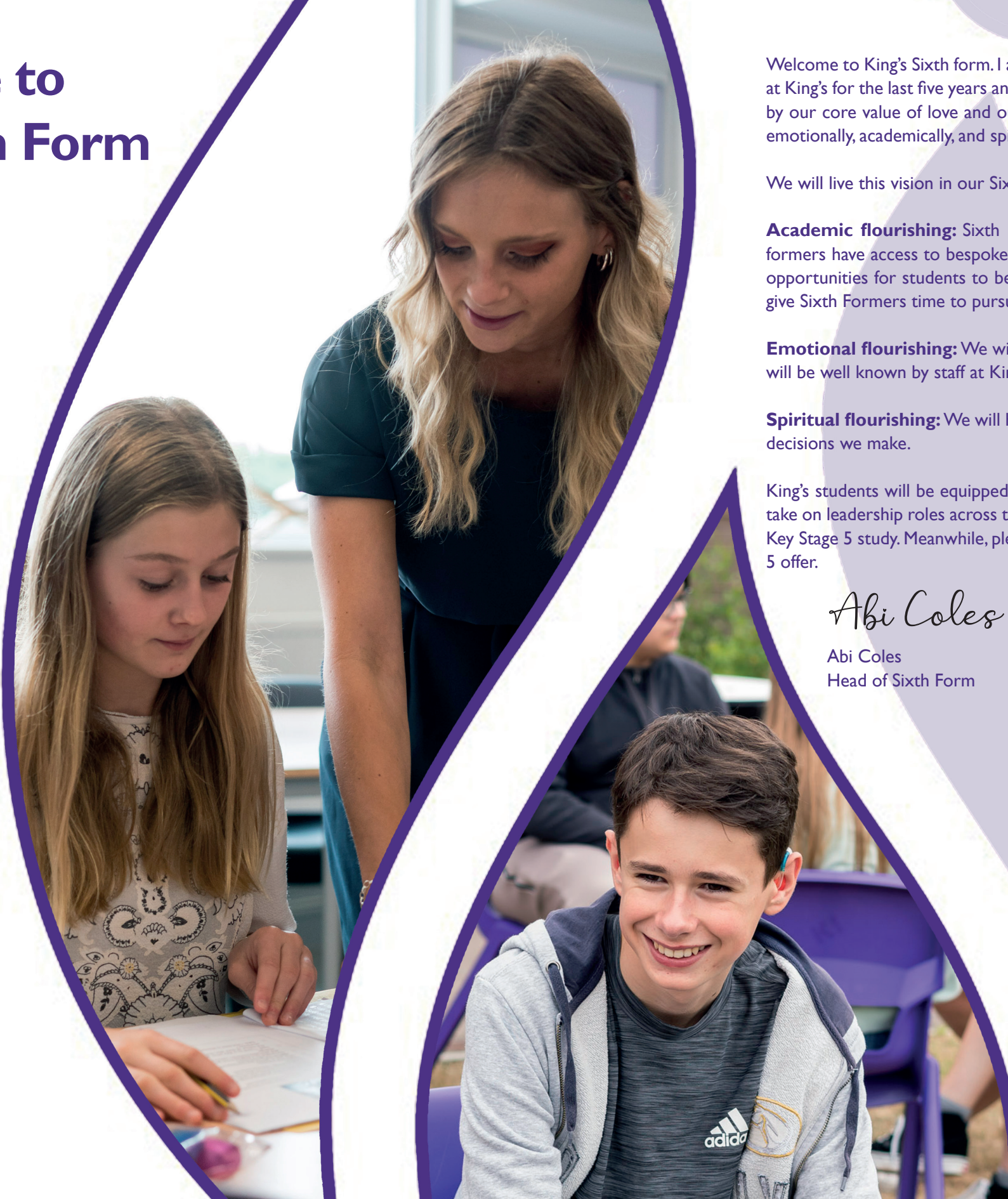
A Warm Welcome to King's School Sixth Form

Welcome to the new King's School Sixth Form, opening in September 2023, and thank you for considering us for your next steps. King's School is a happy, successful, and welcoming inclusive school with a distinctive Christian ethos and values. We opened in 2013, growing our school upwards from Year 7, and we are delighted to be opening our Sixth Form now and extending our provision to Key Stage 5.

Here at King's we have outstanding, caring teachers and excellent, state of the art facilities. We are a school that cares passionately about developing young people and working in partnership with the community we serve. We are a proud member of the Russell Education Trust, a 'family' of like-minded schools, that collaborate to provide mutual support, share their good practice and learn from each other, whilst retaining and developing their own distinctive character. As Sixth Formers you will benefit from exceptionally high quality teaching, bespoke academic support, and expert careers/further education advice. We will ensure that the pastoral care we provide for our Sixth Formers is outstanding, in keeping with the lower school. Our Sixth Formers will be very much part of the school, whilst enjoying increasing independence. We will give you the opportunity to take part in a large range of enrichment activities and you will have many leadership and mentoring opportunities with the younger students. The step up to Sixth Form is significant and very exciting; we understand how best to support you at this vital stage in your education and we are very much looking forward to welcoming our first cohort. Please do come and visit us to find out more about the special provision we can offer you. I look forward to meeting you.

Sarah Price

Sarah Price
Headteacher



Welcome to King's Sixth form. I am delighted to be writing this as the first Head of Sixth Form at King's School. I have had the privilege of working at King's for the last five years and am extremely excited about the Sixth Form opening. At King's School we seek to ensure that all we do is driven by our core value of love and our school's vision statement is: "To share God's love and wisdom, and enable our school community to flourish emotionally, academically, and spiritually."

We will live this vision in our Sixth Form in the following ways.

Academic flourishing: Sixth Formers can expect outstanding teaching and learning in their chosen subjects. We will ensure that all sixth formers have access to bespoke academic support to enable them to reach their full potential in their A-Levels or BTEC courses. There will be opportunities for students to be challenged and pursue their passions through the Extended Project Qualification. We will also ensure that we give Sixth Formers time to pursue their passions within their lessons and the enrichment programme.

Emotional flourishing: We will have excellent pastoral provision and care from tutors, teaching staff and support staff. All Sixth Form students will be well known by staff at King's and nurtured.

Spiritual flourishing: We will have opportunities to reflect on the big questions in life and consider how God's love and wisdom can impact the decisions we make.

King's students will be equipped with the skills they need to be successful in life in their chosen path, and there will be lots of opportunities to take on leadership roles across the school. I look forward to meeting you in person soon and showing you all that we can offer you through your Key Stage 5 study. Meanwhile, please do not hesitate to get in touch with us with any questions you might have about our exciting new Key Stage 5 offer.

Abi Coles

Abi Coles
Head of Sixth Form

Results and Ofsted

As a new free school, within a Multi-Academy Trust, we are experienced in growing our school and ensuring we are successful at all stages of expansion.

King's School has been very successful in GCSE results and we are confident that this success will be replicated at A Level. In our most recent set of GCSE exams students at King's students demonstrated excellent progress and achieved highly across the curriculum. 25% of all GCSE grades were at Grade 7+ and our Progress 8 score was well above the national average. Students from our first cohorts are now studying in a range of well-regarded universities, including Oxford and Cambridge.

Since opening in 2013 King's has received three successful Ofsted inspections. The most recent inspection in March 2022 concluded that the school delivers a good standard of education overall, with outstanding behaviour and attitudes and outstanding personal development. The lead inspector summarised the school by saying "Pupils are confident, articulate and aspiring... Behaviour is exemplary... Staff value each pupil and know them well."

Courses

Choosing the right courses is clearly crucial to success in the Sixth Form. For some students, this will be easy, as your talents lie in a particular area of the curriculum. But for others there could be a range of subjects, all of which appeal to you. When you choose King's Sixth Form, or at least consider it, a member of staff will talk with you about your higher education and/or employment aspirations, then advise you about suitable courses in the Sixth Form. Nevertheless, this task is a shared one: if you have a particular university course in mind, then look at the entry requirements for a number of universities. Anyone wanting to study medicine, for example, will need A Levels in subjects like chemistry, biology and mathematics. If the course is less prescriptive – law, for example – then consider the sort of subjects in which you can demonstrate logical thinking, good communication skills or the ability to evaluate evidence. Remember too that some courses are so oversubscribed that even having three A grades might not be enough to secure a place – so choosing a subject which you like, but do not usually score very highly in, could damage your chances of getting in. These are exactly the kind of issues and options we will discuss with you before you make your final choice and we look forward to these conversations.

The courses that are likely to make up our initial curriculum offer are:

- Art
- Biology
- Chemistry
- Computer Science
- Economics
- English Literature
- French
- Geography
- History
- Mathematics
- Further Mathematics
- Physics
- Psychology
- Religion and Philosophy
- Sociology
- Spanish
- BTEC Applied Science
- BTEC Business Studies

Additional course

- Extended Project Qualification (EPQ)

All courses will be run subject to demand; if there are high levels of demand for other subjects they may be offered.



Pastoral Care and Support

Transitioning to Sixth Form you will notice a real change in culture and in the study habits you are required to adopt. With extra freedom comes extra responsibility that not all students can immediately cope with. It can be difficult to find a balance between studies and a social life that often encompasses driving tests, relationships, part-time work, interviews, university visits and, of course, making a contribution at home. Students have to learn how to organise and prioritise their time; this is not only vital for Sixth Form study but is an important life skill and something we will be very mindful of when students start their Post-16 studies.

At King's Sixth Form, each student will be allocated a personal tutor who they will see each morning as part of the tutorial programme. Personal tutors are the first point of contact for students to get support and guidance for any day-to-day issues. Tutors will also support students through regular one-to-one academic mentoring sessions where they will discuss students' progress in their studies and can help students to manage their time effectively. The Sixth Form Team, including a dedicated Sixth Form Pastoral Officer, will also be on hand to help and support, no matter what the problem may be. Our tutor programme will include sessions in PSHE, careers guidance, and current affairs along with regular assemblies led by staff and external speakers. A fundamental part of Sixth Form life at King's will be the weekly study skills sessions embedded within the tutor programme. These sessions will support students in making good use of their independent study sessions, and managing their time effectively. At King's we will spend quality time getting to know you on a personal level so we can best support you with both your pastoral and academic needs so you can thrive and go on to achieve your goals and reach your full potential.

Facilities

Our new Sixth Form facilities will provide you with very a comfortable working environment. You will have a quiet study room, with study booths, a Sixth Form library, and an area for focused collaborative learning. You will have access to ICT equipment, Wi-Fi and mobile device charging for your continuous use. You will have also have your own Deli Bar with your social room, and an exclusive Sixth Form garden area for relaxing in during your free time. You will also be able to make use of all the lower school facilities, including a gym, Sports Hall, and specialist classrooms.

Financial Support

The 16–19 Bursary Fund is a scheme to help students facing financial hardship to continue in full-time education after Year 11. To qualify, a student must be aged 16 to 19 on 31 August at the start of the academic year in which they start a programme of study; they must also be on a full-time programme of study. Payments are dependent on student attendance, conduct and positive attitude to learning. Students and parents/carers will be expected to agree to and sign a Bursary Fund Contract before payments are made. The Head of Sixth Form and the schools' Finance and Operations Manager will make a decision on who receives the awards based on the criteria in our Bursary Application Form. For more information and advice on our Sixth Form Bursary Fund, please speak to a member of the Sixth Form team or visit our website.

Enrichment

We understand that you select a Sixth Form on the strength of its extracurricular and enrichment offer, as well as the academic courses, and we are committed to providing you with a holistic education. Our school day will incorporate allocated time for enrichment and service. We will offer a wide programme of sporting, arts, and academic extracurricular opportunities including the Duke of Edinburgh Award. We will offer an exciting programme of trips and events for Sixth Formers to enrich your education and to enable you to make lifelong memories.

Student Leadership and Service

At King's School we believe in giving all students opportunities to develop their leadership skills. All students will have the opportunity to pastorally mentor lower school students and to sign up to provide subject support within the classroom, perhaps helping a student who does not have English as their first language or with their maths or reading. We will also provide a wealth of opportunities for serving within the school and in the local community, giving you plenty to talk positively about in UCAS statements.

Dress Code

Students in the King's Sixth Form will not be expected to wear a uniform, but you will be expected to adhere to a dress code which supports your status as role models and leaders in our school community.

Future Progression and Careers

As a smaller school Sixth Form we will be able to provide truly bespoke advice and support for your steps post A-Level, whether you are looking to apply to university, to take up an apprenticeship, or to enter the world of work. We have a very experienced staff team, including Oxbridge alumni, and will be able to prepare students comprehensively for Russell Group university applications, including Oxbridge. We will use the online platform 'Unifrog' to support our careers advice and guidance and we will ensure that every Sixth Former is fully supported in the exciting decisions they take about their future after King's.

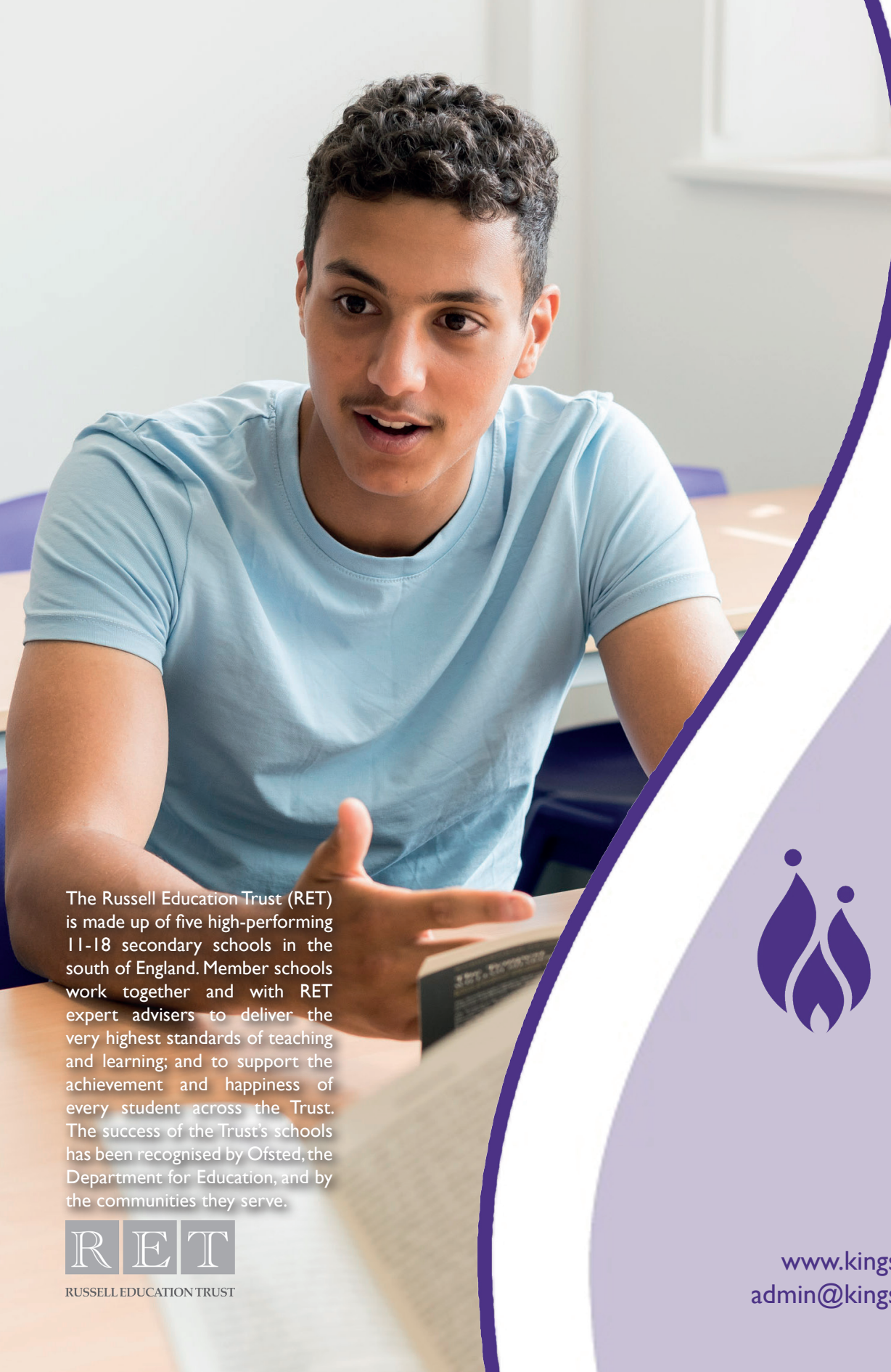
Admissions

Students applying for King's Sixth Form will require at least 5 GCSEs at grade 4–9, including English and Mathematics. In most cases there will also be a specific entry grade required for specific subjects and these are detailed in our Course Guides. Applications can be submitted via our on-line form (www.kingsschoolhove.org.uk). Candidates for the Sixth Form may be in Year 11 at King's School or following courses at other schools. All candidates, both internal and external, will be invited to discuss course options in the Sixth Form. For acceptance on a particular course, candidates are expected to meet the minimum entry requirements for the course. Success in the Sixth Form needs you to make a firm commitment to your future. It is rooted in hard work and having a positive attitude to learning; we want students who attend and are committed to their courses and programmes of study. Once enrolled we expect your attendance to be at least 96%.

Contact Information and How to Apply

For more information about King's Sixth Form, please view our website www.kingsschoolhove.org.uk or email sixthform@kingsschoolhove.org.uk





The Russell Education Trust (RET) is made up of five high-performing 11-18 secondary schools in the south of England. Member schools work together and with RET expert advisers to deliver the very highest standards of teaching and learning; and to support the achievement and happiness of every student across the Trust. The success of the Trust's schools has been recognised by Ofsted, the Department for Education, and by the communities they serve.

RET

RUSSELL EDUCATION TRUST

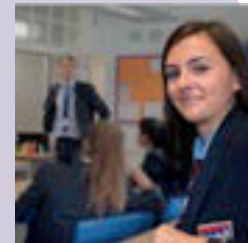
Bristol Free School
Leaders have ensured that the curriculum is engaging for pupils, and that it promotes diversity. Teachers have strong subject knowledge, know their pupils well, and use this knowledge to help them learn. Pupils behave well. There is rarely any disruption to learning.

Ofsted 2022



Becket Keys Church of England School
The headteacher's inspired leadership has quickly established a vibrant, orderly community which enables students to thrive. He ensures that a family atmosphere is fostered across the school in which all students feel cared for, and valued.

Ofsted 2014



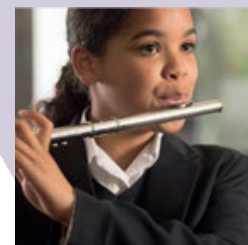
St Andrew The Apostle School
The religious ethos in the school provides a strong base for the support of pupils' personal development and welfare. Pupils speak with pride about their school and relationships in the school.

Ofsted 2018



Turing House School
The school has many strengths. Leaders have established an open culture at the school where there is a clear sense of teamwork and community across staff and pupils alike. Everyone takes pride in the school. It is a welcoming and vibrant place.

Ofsted 2014



**King's
School**

King's School
Hangleton Way
BN3 8BN

01273 840004

www.kingsschoolhove.org.uk

admin@kingsschoolhove.org.uk

