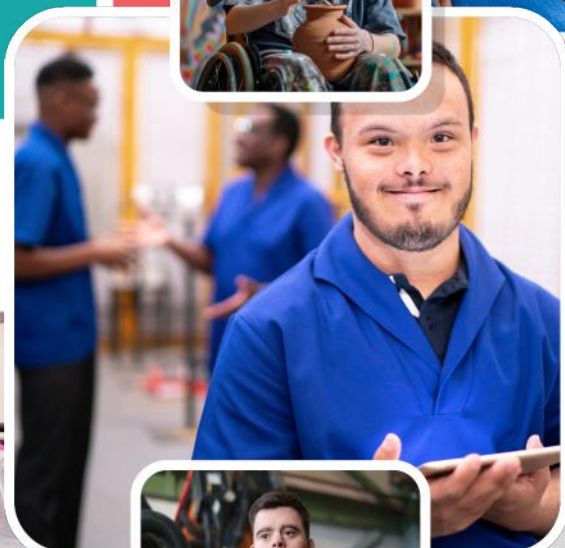
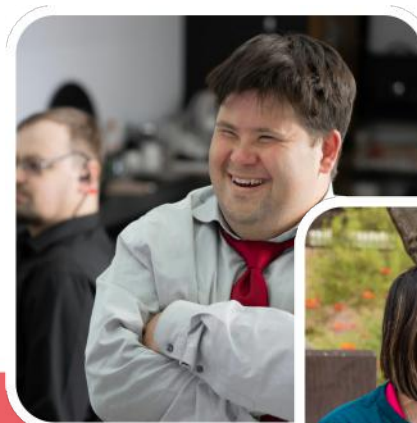


POST 16 OPTIONS

A guide for Parent/Carers
and Families of Young
People with SEND.



Contents

Page 2 -	What is preparing for adulthood?
Page 3 -	What is Post-16 Education
Page 4 -	Preparing for Post-16 Transition
Page 5 -	What support is available?
Page 6 -	Getting the most out of EHCP review meetings
Page 7 -	What is a local offer?
Page 8-	Transition from one setting to the next when your child has an EHCP
Page 9 -	What is a Study Programme?
Page 10 -	What types of Post-16 education & training are available?
Page 11 -	Types of Courses
Page 12 -	Types of Courses - SEND Routes Post-16
Page 13 -	A-levels
Page 14 -	Vocational Technical Qualifications (VTQs)
Page 15 -	T-Levels
Page 16 -	Foundation Courses
Page 17 -	Who offers foundation programmes near me?
Page 19 -	Independent Training Providers
Page 21 -	Specialist settings
Page 22 -	Specialist settings near me
Page 23 -	Specialist FE College / Specialist Post-16 Providers
Page 24 -	Independent Specialist Providers
Page 25 -	Supported Internships
Page 26 -	Who offers this near me?
Page 27 -	Apprenticeships
Page 28 -	Employment or Volunteering
Page 29 -	Supporting Career Planning
Page 31 -	Interview Questions
Page 32 -	Useful Websites



What is preparing for adulthood?

Young people with Special Educational Needs and/or Disabilities (SEND) are supported to think about what they want to do long-term from the earliest age possible. Working with families and professionals, **West Sussex, Brighton & Hove Councils** encourage young people to think about the following:

Employment (and the right education to get there)



Somewhere to live



Having friends and being part of their community



Being happy, healthy, safe and confident about their future



What is Post 16 Education?

There is a lot more choice for education after year 11. This is called post-16 education.

All young people have to take part in education up until they are 18.

This education could include:

Full-time education

like school, college or independent training providers.

Work-based learning

like an apprenticeship or supported internship.

Part-time education or training

if you are employed or volunteering at least 20hrs per week.

The information in this booklet is just one of the things that can help young people and their families to choose which post-16 education option is best.

Young people aged 16 to 18 who are not in education, training or employment are offered support to take up post-16 education by **West Sussex, Brighton & Hove Councils**.



Click to view



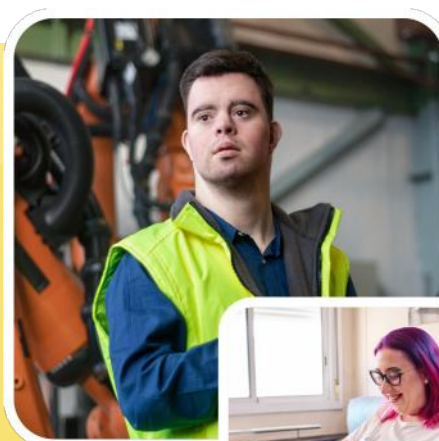
Preparing for Post-16 Transition

Support to develop ideas can come from many people including family members, school staff, careers leader, careers advisers and other professionals who might work with you. By starting early and working together, you can help your child or young person navigate this journey with confidence.

The following checklist offers practical steps to guide you through the preparation process, ensuring your child or young person's needs, interests, and aspirations remain at the heart of every decision.

Where do I start?

- Start discussions early (Year 9 is a good time) to ensure a smooth transition.
- Work closely with your child's or young person's school, SENCO, and careers adviser to identify options.
- Arrange visits to colleges, training providers, and workplaces to explore suitability.
- Encourage your child or young person to express their interests and aspirations to ensure their voice is central to planning.



What support is available?



Education, Health, and Care Plans (EHCPs)

- If your child or young person has an EHCP this will outline the additional support that they need as they move into post 16 education.
- There will be annual review meetings to discuss progress and support needs as they move through school into post-16 learning.

Local Offer

- Every local authority has a Local Offer on their website. This provides a single place to go to for the information, services and resources that you might need as a parent or carer of a child or young person with SEND.
- This includes education, health, and social care services.

Transport

- Your local authority may provide travel training or assistance with transport to and from post-16 education settings. Some young people may qualify for the 16 to 19 Bursary which can also be used to help with travel costs.

Specialist Careers Advice

- Careers advisers trained in SEND can help identify suitable pathways.

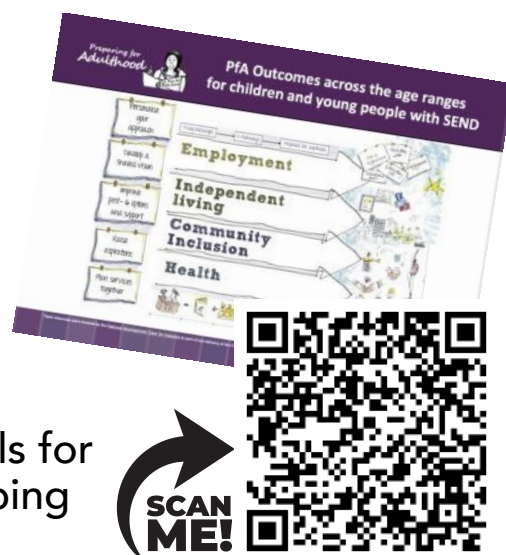
Getting the most out of EHCP review meetings

If your child or young person has an EHCP, then you will be invited to attend annual review meetings. The school may also invite other people involved in supporting your child/ young person, for example the SEN case officer, a teaching assistant, a speech and language therapist, or a specialist advisory teacher. A social worker, health practitioners and careers and transitions leads or equivalent may be involved- in practice, who attends will depend very much on your child's needs and circumstances.



These meetings are an opportunity for yourself and your child/young person where appropriate to discuss their aspirations for the future, and how they need to be supported to achieve this. The aim is for young people with SEND to be supported towards greater independence and employability.

From Year 9 onwards the annual review meeting must include a focus on preparing for adulthood and independent living. Outcomes will need to have a greater consideration of independence and planning for the future. This may include managing money, travel training, skills for independence, social opportunities and keeping healthy.



If it is likely that your young person will need support in daily life post 18 you may consider contacting Adult Social Care as they approach adulthood.

What is a local offer?

A local SEND offer is a guide that explains the support available for children and young people (aged 0-25) with Special Educational Needs and Disabilities (SEND) in a specific area. Every local authority in England is required to publish a Local Offer, which provides details about:

- ✓ **Education** – Support in nurseries, schools, and colleges
- ✓ **Health** – Services like speech therapy, physiotherapy, and mental health support
- ✓ **Social Care** – Help for families, short breaks, and support groups
- ✓ **Transport** – How children with SEND can get to school or college
- ✓ **Activities** – Clubs, sports, and leisure opportunities

The local offer is designed to help parents, carers and young people easily find information, services, and resources to help them understand their rights and where they can go for support.

WEST SUSSEX COUNCIL LOCAL SEND OFFER

Supports children and young people with SEND by providing details on local services, including education, healthcare, social care, and community activities to help them thrive.

SCAN or
Click to view



BRIGHTON & HOVE COUNCIL LOCAL SEND OFFER

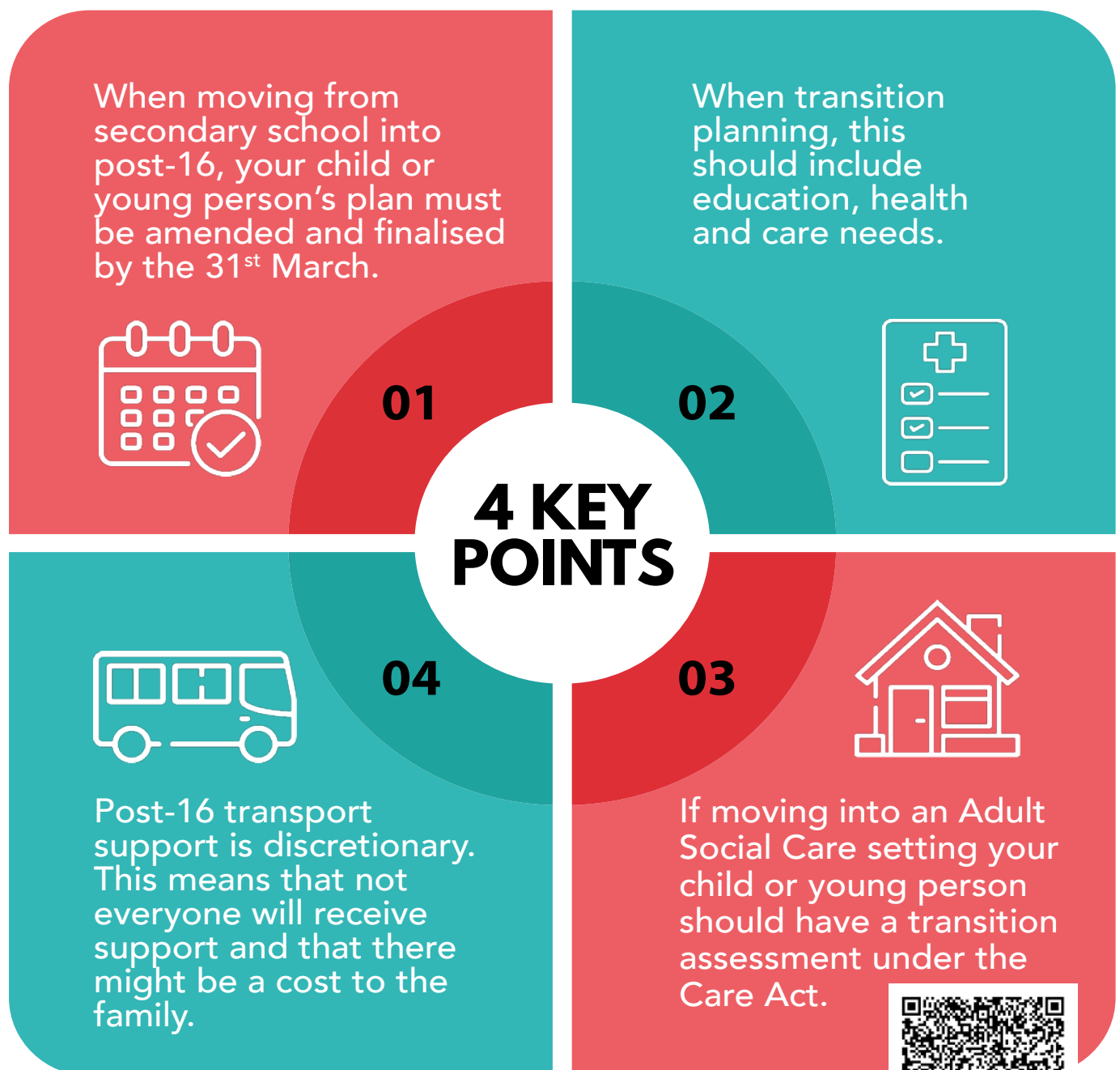
Information and support for children and young people with special educational needs and disabilities (SEND), covering education, health, social care, and activities to help them access the right services.

SCAN or
Click to view



Transition from one setting to the next when your child has an EHCP

You can find information about moving into post-16 learning through your local offer pages, and there may be a local Preparing for Adulthood guide available in your area – but here are a few key pieces of information:



What is a Study Programme?

Post-16 education is known as a study programme.

This usually includes:

- **an academic qualification** (e.g A-Levels) or a **vocational qualification** (T-Levels, BTECs) or a substantial work placement.
- **continuing to improve English and Maths** skills, working towards GCSE grade 4 and functional skills, where appropriate.

A young person who is taking a full-time study programme will usually be at their place of learning for an average of **16 hours per week**.

This might fit into **3 x full days** or could be spread over **5 x days**.

Some young people might be able to access up to 5 x full days of provision where appropriate. For young people with an EHCP this would need to be discussed and agreed through the annual review process and might include provision across education, health and care.



What types of post-16 education & training are available?

There are many post-16 education options, and young people can switch pathways. For example, a student might start at sixth form, move to a training provider, and later find a job.

Think of it like a journey: some take the bus, others walk or drive. The route can change, but the destination remains the same.

No option is better—it's about what works best for your child or young person.



Types of Courses

Courses after Year 11 usually fall into three main categories:

- **Academic**
- **Vocational and/or Technical**
- **Work-based**

Some young people might combine these options, depending on what suits their learning style and future plans. It's helpful to talk to your child or young person's careers adviser, teacher, or family members to explore what would be the best fit for them.

In the next few sections, we'll outline the differences between these types of courses to help you support your child or young person's decision-making.

Academic Courses

These courses are more focused on the study and theory of a subject:

- They include qualifications such as GCSEs (Secondary school), A-levels (Sixth form), and Degrees (University).
- Over 40 different subjects available at A-level with thousands of different Degree subjects at University.
- These type of courses are usually delivered by schools, colleges, or universities.

Vocational and/or Technical

These are work-related qualifications designed to help learners gain the knowledge, practical skills, and experience needed for specific jobs:

- They range from Entry Level up to Level 8.
- Common areas include Animal Care & Land-based Studies, Business, Engineering, Health & Social Care, Hair & Beauty, Construction, and Digital Media.
- They are typically delivered by schools, colleges, or Independent Specialist Providers.

Work Based

These programmes take place in a work setting and focus on building skills and gaining experience. They include Supported Internships and Apprenticeships, both of which help develop work skills and increase experience.

- Apprenticeships are supported by training providers and employers.
- Supported Internships are usually supported by a college and an employer.

Types of Courses

SEND Routes Post-16

16 YEARS OLD

ACADEMIC COURSES	VOCATIONAL / TECHNICAL	WORK BASED		
A-Levels	BTEC Lvl 1-3, T-Levels & Foundation Courses	Supported Internships	Apprenticeships & Inclusive Apprenticeships	Employment or Volunteering

Where can you find these options?

Further Education Colleges	Further Education Colleges	Further Education Colleges	Further Education Colleges	Local Businesses
School Sixth Forms	School Sixth Forms	Independent Training Providers	Independent Training Providers	Local Charities & Community Centres
	Independent Training Providers	Specialist Settings	Local Businesses	
	Specialist Settings			



A-Levels

Whether your child or young person chooses to attend a school sixth form or a college, A-Levels offer a pathway to widely recognised qualifications valued by employers and universities. These courses provide academic knowledge while helping young people develop skills such as independence, time management, and critical thinking, crucial for future success.



Find out more about A- levels
in - What Next? - West
Sussex, Brighton and Hove -
P8

A-Levels are typically assessed through exams, allowing students to demonstrate their understanding and skills under structured conditions. This learning and assessment style prepares them well for higher education, where independent study and self-discipline are key.

Choosing A-Levels opens doors to various career opportunities and university courses, providing a strong foundation for young people to achieve their goals.

How can this benefit my child?

Short Term

Develop independence and communication skills.

Medium Term

The option to gain an in-depth knowledge of a range of subjects.

Long Term

Earn qualifications to advance in education and access higher studies.

Vocational and/or Technical

Vocational Technical Qualifications (VTQs)

Vocational qualifications, which are often taken at college but might also be on offer at school sixth forms or independent training providers, usually combine practical and classroom learning. They also provide opportunities for work experience.. They are available at a range of levels (1, 2, and 3) with different entry requirements.

Vocational qualifications enable young people to develop industry skills which can be applied to real life situations to prepare for employment. They also support the development of independence and life skills. Some courses may require learners to take exams as well as produce evidence of their new skills and knowledge throughout the year. Some vocational qualifications can be used to progress onto university level learning.

Click to view



How can this benefit my child?

Short Term

Explore different careers or develop skills for a chosen job.

Medium Term

Gain a qualification relevant to a specific industry or job.

Long Term

Leads to career opportunities or further training or higher education.

T-Levels

T-Levels are a high-quality, career-focused alternative to A Levels, designed for young people aged 16 to 19 who want to gain practical skills and real experience in a specific industry. Developed in collaboration with employers and education providers, T-Levels combine classroom learning with a 45-day industry placement, allowing students to learn theory and build skills in college or school, then apply them in real-world settings. Recognised by

universities and employers, T-Levels offer a clear route into skilled employment, apprenticeships, or higher education.

Each course focuses on a specific sector—such as digital, healthcare, construction, or education—and includes essential training in problem-solving, teamwork, communication, and professionalism. By blending academic knowledge with hands-on experience, T-Levels help young people grow in confidence, develop technical skills, and become work-ready, giving them a strong and respected foundation for success in their chosen career path.

Click to view



How can this benefit my child?

Short Term

Builds confidence with support.

Medium Term

Develops skills through real experience.

Long Term

Opens doors to work or study and higher education.

Foundation Courses

For young people who need more support as they start college a range of foundation courses are on offer. The courses on offer at each college will differ in various ways e.g. the name given to the course, the learning levels that it can cover, the entry criteria, and how the course links with other college courses on offer. Courses will often include employability skills, English and maths, work experience or other opportunities to practise work-skills, and personal/social support to overcome barriers to engagement.

Click to view



What all of these courses have in common is that they will include lots of extra support to progress meaning that they often act as a 'stepping stone' onto the next stage in a student's learning journey.

How can this benefit my child?

Short Term

Experience a range of jobs or learn skills related to a preferred job.

Medium Term

Gain qualification relevant to a specific industry or job.

Long Term

Learn practical skills related to real life work.

Vocational and/or Technical

Who offers Foundation programmes near me?

Ask yourself...



- Does my child or young person need extra support with learning?
- Would my child or young person benefit from smaller class sizes?
- Are they unsure about their next steps?

Foundation Courses

SCAN or CLICK
the QR codes for
more information



Courses focus on building independence, confidence, and practical skills. A supportive team ensures every student can thrive and progress at their own pace.



Combines hands-on, land-based learning with core skill development in small, supported class settings to build confidence and prepare for next steps.



Tailored programmes offering life skills, employability training, and inclusive classroom experiences, designed to support progression into work or further study.



Vocational and/or Technical

Foundation programmes near me cont...

SCAN or CLICK
the QR codes for
more information



Structured support for learners with SEND, helping students improve communication, self-management, and prepare for further training or employment. students who do not have an EHCP.



Foundation and inclusion courses supporting learners through a wide range of creative, vocational, and life skills development.



Specialist staff and dedicated programmes empower young people with additional needs to grow academically, socially, and personally in a safe setting.



5 TIPS FOR CHOOSING THE RIGHT FOUNDATION PROGRAMME

✓ Find the Right Fit

Consider how the course aligns with your child's personality, learning preferences, and any support they might benefit from.

✓ Explore Available Help

Ask about the support options—such as learning assistance, wellbeing services, or specialist equipment—that could make a difference.

✓ See It for Yourself

Attend open events, speak with tutors, and chat to current students and families to get a clearer picture.

✓ Think Logistically

Look into how your child will get there, how long the journey takes, and whether the campus environment suits their needs.

✓ Look to the Future

Find out what previous students have gone on to do—whether it's another course, an apprenticeship, or stepping into a job.

Vocational and/or Technical

Independent Training Providers

Supportive Study Programmes

SCAN or CLICK
the QR codes for
more information

The logo for SAND (Sussex Access Network for Disabled) features the word "SAND" in a bold, black, sans-serif font. The letter "A" is stylized with a cluster of small black dots to its right.

Vocational learning that blends real-life work experience with social development and confidence-building for young adults with additional needs.



Creative industry courses in music, media, fashion, and more – all with wraparound support to help learners progress into careers or further training.



Provides education and care for young people with disabilities moving from school into adulthood, with a focus on independence and well-being.



A specialist provider supporting vulnerable young people through bespoke education, work preparation, and life skills.



Statutory SEND teams may sometimes be able to discuss bespoke study programmes using smaller providers for young people facing significant and complex barriers to learning.

Vocational and/or Technical

Independent Training Providers Cont...

Supportive Study Programmes

SCAN or CLICK
the QR codes for
more information



Creative learning programmes that use art, music, and performance to build confidence and self-expression in young people with SEND.



Provides apprenticeships and work-based training, including supportive pathways for learners with additional needs aiming to enter employment.



National provider offering apprenticeships in hospitality, catering, and retail – with extra support for learners who may require adjustments.



Delivers health and social care apprenticeships, offering mentoring and tailored learning approaches for SEND students seeking a career in care.

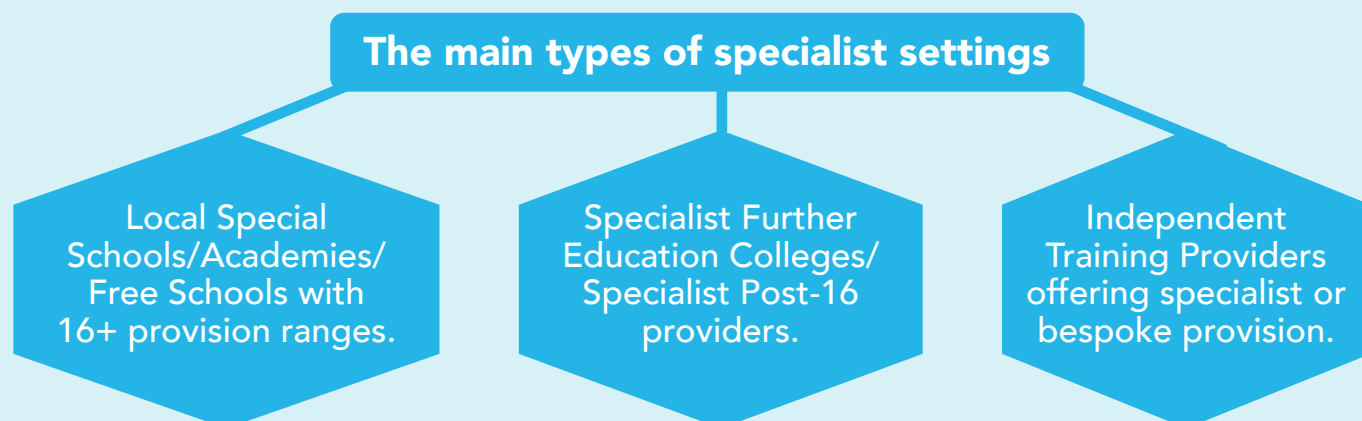


Statutory SEND teams may sometimes be able to discuss bespoke study programmes using smaller providers for young people facing significant and complex barriers to learning.

Specialist Settings

There are different types of setting which would be described as **Specialist**. A possible placement at a specialist setting would normally be discussed through the EHCP annual review process, as young people considering a specialist setting for their post-16 education would usually have an EHCP. The offer of a placement at a specialist setting will need to be agreed by statutory SEND teams based on a young person's Special Educational Needs.

There might be a range of academic and vocational courses on offer as well as a focus on independent living skills, personal development and employability. Different settings will cater for different age ranges.



Use this link for a detailed explanation of education setting types: [Types of schools and other settings | \(IPSEA\) Independent Provider of Special Education Advice](#)

How can this benefit my child?



Specialist settings near me

Local Special Schools/Academies/
Free Schools with 16+ Provision

SCAN or CLICK
the QR codes for
more information.



Music-focused specialist education that supports young people with SEND in developing confidence, qualifications, and life skills through creativity.



East Clayton Farm

A working farm offering therapeutic learning and vocational training for young people with SEND, focusing on life, land, and practical skills.



1900-2025
CLARION HOUSING GROUP

Supports young people with additional needs in gaining work experience, qualifications, and entry-level job skills to increase employability.



Helps adults with learning disabilities and autism to access paid work, build life skills, and develop independence through tailored support.



One-to-one and small group bespoke programmes for students with complex needs, often delivered outside of traditional classrooms.



Provides inclusive play and social opportunities for children and young adults with SEND, supporting social interaction and family respite.



Refer back to page 20 featuring some of the largest local providers who may have a specialist or high needs offer. As some providers are very small and what is on offer can change - always remember to check your local offer pages and to discuss with SEND teams and Specialist Careers Advisers to get a full picture of what is available in your area.

Specialist FE College / Specialist Post-16 Providers

Specialist Further Education Colleges/Specialist post-16 providers cater for young people with more complex or specific needs. Different providers are equipped to support certain levels and types of need and may have a particular specialism. This can include severe and complex needs, physical disabilities, neurodivergent conditions and behaviour that challenges.

The links overleaf are for Specialist Further Education Colleges/Specialist post-16 providers that are located within West Sussex, Brighton & Hove and are currently on the Section 41 list.

To get the most up to date information and to find out more about specialist provision across a wider area including all **open specialist schools and colleges**, you can also talk to your local authority SEND team and check:

- Your local offer pages - **page 8**
- The Natspec college search tool [Search - Natspec](#)
- The current Section 41 list [Independent special schools and post-16 institutions - GOV.UK](#)
- The full list of special schools and colleges in your local authority area. [Get Information about Schools - GOV.UK](#)
- Your local SENDIAS service is also a good source of information and support - **page 35**



Independent Specialist Providers




Brighton & Hove
City Council
Youth Employment Hub




impact
INITIATIVES




Brighton & Hove
City Council
Supported Employment




West Sussex Careers Team




United
Response



5 TIPS FOR CHOOSING THE RIGHT SPECIALIST SETTING

- ✓ **Match to Your Child's Needs** – Ensure they offer the right support, learning style, and qualifications.
- ✓ **Check Support Services** – Look for therapies, mental health support, and assistive technology.
- ✓ **Visit & Ask Questions** – Meet staff, see the facilities, and hear from other parents.
- ✓ **Consider Travel & Accessibility** – Make sure transport and facilities suit your child's needs.
- ✓ **Think About the Future** – Look at where students go next—jobs, apprenticeships, or further education.

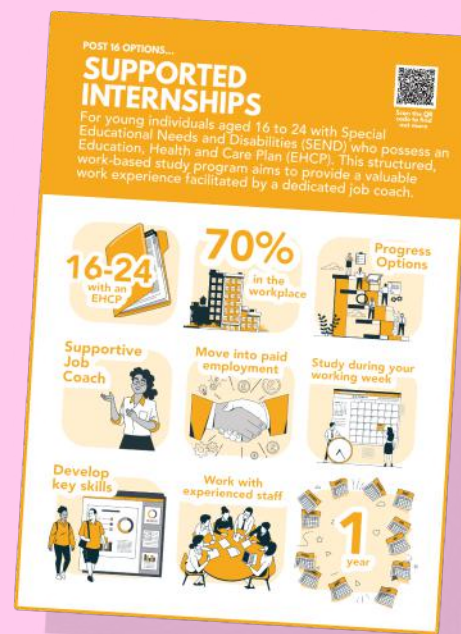
Supported Internships

Supported Internships are only for young people with an Education, Health and Care (EHC) Plan to achieve sustainable, paid employment.

The personalised programme allows the young person to learn in the workplace whilst also having the chance to study for relevant qualifications, if suitable, at an appropriate level.

The internship normally lasts for a year and includes at least six months of unpaid work experience. Although similar to an apprenticeship, this type of programme is tailored to those who would require a higher level of support, such as a job coach.

Click to view



How can this benefit my child?

Short Term

Improve communication skills.

Medium Term

Develop confidence and a wider social network.

Long Term

Progress towards life goals and aspirations, such as getting a job.



The Access to Work fund - Page 33 - can be used to provide additional support/ equipment, including a job coach and/or the extra costs of transport if it is not possible to use public transport.

Who offers this near me?

In the West Sussex, Brighton and Hove region, these are currently being offered by mainstream colleges, training providers or specialist colleges. Often suitable as a progression from another course.

Supported Internships

SCAN or CLICK
the QR codes for
more information.



A structured programme for young adults with EHCPs, helping them gain practical skills and work experience in land-based industries.



An award-winning programme supporting young adults with learning disabilities to move into paid employment through real-world experience and training.



Local internships offering supported transition from education to employment for students with SEND, with a strong focus on preparation for adulthood.



A national programme offering high-quality supported internships in partnership with employers and educators for young adults with SEND.



New supported internship programme launching in 2025, aimed at giving young people with EHCPs the tools and confidence to enter the workforce.



Apprenticeships

An apprenticeship allows a young person to earn a salary while working toward a nationally recognised qualification and gaining valuable experience.

There is a wide range of apprenticeships to suit different skills and interests. Training providers offer support for learners with additional needs, and those with an EHCP can take an 'Inclusive apprenticeship,' with adjustments made to meet their SEND needs.

Unlike college or university, apprenticeships offer practical, on-the-job learning, with some not requiring college attendance. It's important to choose an apprenticeship that aligns with both career goals and preferred learning styles.

How can this benefit my child?

Short Term

Earn a wage while learning.

Medium Term

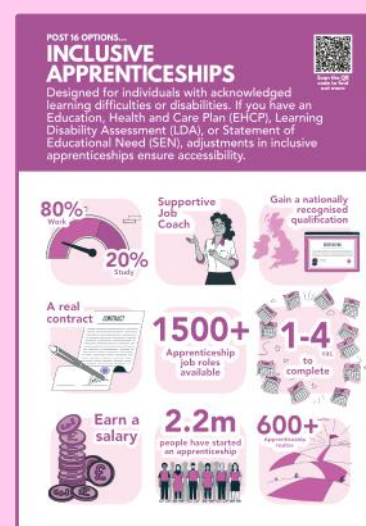
Gain recognised qualifications and train for future careers.

Long Term

Earn £100k more on average than unqualified workers over your career.

Search and apply for apprenticeship vacancies at:
www.gov.uk/apply-apprenticeship.

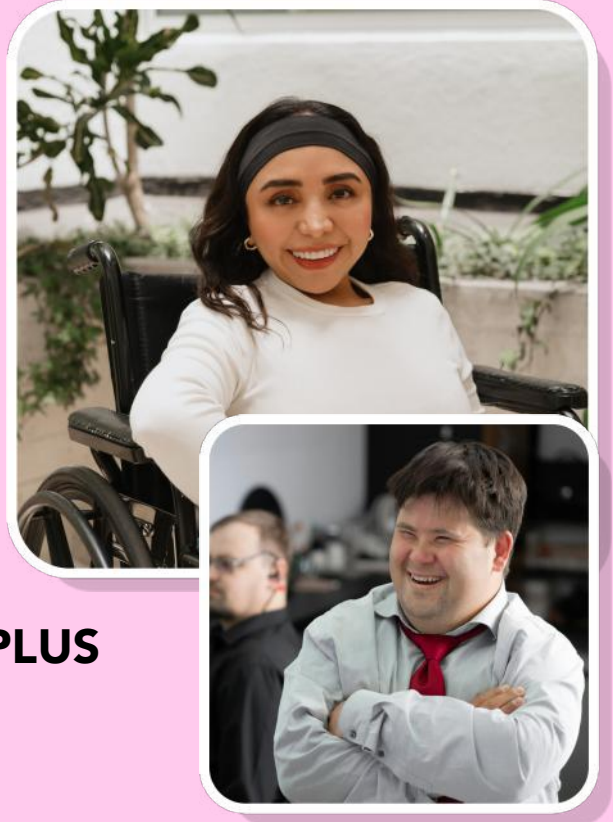
Click to view



Find out more about
Apprenticeships in What Next
in the Marches? - Post-16

Employment or Volunteering

Although young people must be doing some form of recognised accredited education or training until they are 18, this does not mean they have to attend college or school. For those that would rather work (whether paid or voluntary) this is still an option, as long as it involves **at least 20 hours of work per week PLUS working towards a nationally-recognised qualification.**



How can this benefit my child?

Short Term

Gain valuable work experience.

Medium Term

Work towards nationally-recognised qualifications.

Long Term

Develop communication and interaction skills for jobs.



Your child or young person can become self-employed and still count as participating, as long as they are doing part-time accredited education or training as well.

Supporting Career Planning

Helping your child plan their career is an essential part of their post-16 journey.

Here are some ways to support them:

Explore Interests and Strengths

- Encourage your child or young person to talk about what they enjoy and what they're good at.
- Use tools like interest questionnaires and skills assessments tailored to SEND students.



Research Career Pathways

- Explore how different pathways align with your child or young person's interests and strengths.
- Investigate progression routes from entry-level roles to advanced opportunities.
- [West Sussex, Brighton & Hove—Your Futures](#)



Encourage Work Experience

- Work experience can provide valuable insight into different careers and help build confidence.
- Supported work placements are often available for SEND young people.





Teach Employability Skills

- Focus on communication, teamwork, time management, and problem-solving skills.
- Encourage activities that build these skills, such as volunteering or group projects.

Promote Independence

- Encourage your child or young person to take an active role in their career planning and decision-making.
- Support them in building confidence and self-advocacy skills.



Set Realistic Goals

- Help your child or young person set short-term and long-term goals based on their abilities and aspirations.
- Break these goals into manageable steps to track progress.

Utilise Support Networks

- Work with your child or young person's school, SENCO, and careers adviser to explore opportunities.
- Connect with local charities or organisations that specialise in supporting young people with SEND.
- [West Sussex, Brighton & Hove—Your Futures](#)



Interview Questions

Here are some key questions you can ask during college interviews and when exploring other post-16 options. These will help you and your child make informed decisions about their future education, training, and career pathways.

- How is the course assessed? (e.g. exams, coursework, practical)
- How will my child or young person get feedback on progress? (e.g. annual reviews, daily/weekly communication)
- What can my child progress onto?
- What support is available for students with Special Educational Needs?
- What resources, equipment and facilities are you using on the course?
- What does the college day/curriculum look like? Ask to see a sample timetable
- What work experience placements can you offer students?
- If appropriate could the young person progress to a supported internship?
- What links do you have with local companies/employers?
- Will I need to buy any books, equipment, or special clothing for my child? Costs?
- What financial support is available for support with travel, equipment, safety clothing or books?
- What enrichment activities are available?
- Can my child or young person get to college by bus/train?



USEFUL WEBSITES

Use the following websites for information and support to help inform your decision.

General Careers Information & Post-16 Information

National Careers Service - Providing information, advice and guidance to help you make decisions on learning, training and work.
<https://nationalcareers.service.gov.uk>

Skills for Careers - use this site for a clear overview of the different options that are available to young people.
[Young People | Skills for Careers \(education.gov.uk\)](https://www.skillsforcareers.org.uk)

Careers Pilot - Careers information and tools for 11-19 year olds.
<https://www.careerpilot.org.uk>

Icould - Find inspiration and explore your ideas using real-life career videos. <https://icould.com/>

BBC bitesize careers - a really good range of articles and information from the BBC with career stories, videos, quizzes to help young people with their careers ideas.
<https://www.bbc.co.uk/bitesize/careers>

Careers Advice for Families (Youth Employment UK) – Guidance for parents and carers to support young people in making career decisions. <https://www.youthemployment.org.uk/careers-advice-for-parents/>

T Levels - use this site to learn more about what T Levels are and how they work.
<https://www.tlevels.gov.uk/>

Prospects – a great source of information mainly aimed at young people who might consider university graduate level careers in the future or for those who are already at university.
www.prospects.ac.uk

UCAS - Universities and colleges admissions service, offering support and advice so you can make an informed decisions about your future. www.ucas.com/further-education

Informed Choices - iThe tool created by the Russell Group of universities to help you link University ideas to your A level choices.
<https://www.informedchoices.ac.uk/>

Brighton & Hove Youth Employment Hub

The Youth Employment Hub supports young adults aged 16 to 25 in Brighton & Hove by offering guidance on education, employment, and training opportunities. Services include career advice, job search assistance, apprenticeship information, and benefits guidance. The Hub also provides access to computers and hosts various events and workshops to help young people achieve their career goals.

<https://www.brighton-hove.gov.uk/youth-employment-hub>

West Sussex County Council – Jobs and Careers Support for Young People

– This West Sussex County Council page provides information and guidance for young people on finding jobs, apprenticeships, training, and career advice, including support for those who are not in education, employment, or training (NEET).

<https://www.westsussex.gov.uk/jobs/jobs-and-careers-support-for-young-people/>

Access to Work – get support if you have a disability or health condition – GOV.UK

– An easy-to-read version of the GOV.UK Access to Work guide, explaining how people with disabilities or health conditions can get financial support and workplace adjustments to help them succeed in their careers.

<https://www.gov.uk/government/publications/easy-read-get-help-at-work-if-youre-disabled-or-have-a-health-condition-access-to-work>

Access Learning Disability Advice and Support | Mencap – Mencap provides advice and support for people with learning disabilities, offering guidance on accessing services, education, and employment opportunities to improve their quality of life and independence.

https://www.mencap.org.uk/advice-and-support?gad_source=1&gclid=EAlaIQobChMlnpTv9o7fjAMVHYtQBh3sRhWLEAAYASAAEgK64_D_BwE

Looking for Work if you're disabled – This GOV.UK resource offers guidance and support for individuals with disabilities seeking employment, providing practical advice and information on how to access job opportunities and workplace adjustments.

<https://www.gov.uk/looking-for-work-if-disabled>

West Sussex, Brighton & Hove Careers Hub – Explore a wide range of post-16 and post-18 career pathways with the West Sussex, Brighton & Hove Careers Hub, offering personalized guidance and opportunities to help students take the next step towards their future success.

<https://www.careershubwsbh.co.uk/schools-and-colleges/#post-16-18>

Information About Work-Based Pathways

What Are Supported Internships? - NDTi - An easy read guide to supported internships, explaining what they are and how they can help young people with SEND gain work experience.

<https://www.ndti.org.uk/resources/publication/what-are-supported-internships>

The Government information and guidance on Supported Internships - Official government guidance on supported internships for young people with additional needs. [Supported internships - GOV.UK \(www.gov.uk\)](https://www.gov.uk/guidance/supported-internships)

Supported Employment (BASE-UK) – An overview of supported employment and how it helps individuals with additional needs find and retain work. <https://www.base-uk.org/page/What-is-Supported-Employment>

Enable – Supported Internships - Shropshire-based service delivering projects and programmes to help people with SEND find and sustain employment. Enable also partners on local supported internships.

<https://enableservices.co.uk/services/supported-internships/>

DFN Project SEARCH - A national organisation partnering with local providers to offer high-quality supported internship programmes for young people with SEND.

<https://www.dfnprojectsearch.org>

Access to Work (GOV.UK) – Government support available for individuals with disabilities or health conditions to help them succeed in the workplace. An Access to Work grant could help pay for specialist equipment, support workers, travel costs etc. This vital funding does not affect your benefits and ensures outcomes are sustainable.

<https://www.gov.uk/access-to-work>

Apprenticeships for All – Animation - A short and accessible animation explaining how apprenticeships can be adapted to be inclusive.

<https://www.youtube.com/watch?v=5JgMIFZsVy0>

Apprenticeship Guide - Use this site as a tool to discover your perfect Apprenticeship role.

<https://apprenticeshipguide.co.uk>

Talking Futures - A parent-facing resource offering guidance on how to have career conversations with your child.

<https://www.talkingfutures.org.uk>

Talking Futures - A set of prompt cards to help parents and careers talk to their teens about career ideas.

<https://www.talkingfutures.org.uk/conversation-cards/>

Careers Advice & Resources Aimed at Parents

The Parents Perspective - an exciting podcast series for parents and carers, helping them to support their children with careers advice and guidance

<https://amazingapprenticeships.com/the-parent-perspective->

Careermag - If you're a school leaver, graduate or job seeker, we have lots of options! Search & apply for apprenticeships, graduate schemes & jobs.

<https://careermag.co.uk/career-advice/careermag/for-parents-guardians>

Youth Employment Parent Link - Supportive careers advice and resources to help parents guide their children through education and employment choices.

<https://www.youthemployment.org.uk/careers-advice-for-parents/>

Choices Magazine – Amazing Apprenticeships - Check out the monthly 'Choices' magazine. The March 2025 issue was SEND-focused and is full of helpful content.

<https://www.amazingapprenticeships.com/zones/parent/>

West Sussex Parent Carer Forum - A forum group representing parents and carers of children with SEND, helping to ensure their voices are heard locally.

<https://www.wspcf.org.uk>

Parent Carer Council Brighton & Hove (PACC) - A Brighton-based parent carer forum promoting the participation of families in SEND service planning.

<https://paccbrighton.org.uk>

West Sussex SENDIAS Service - The SENDIAS (Special Educational Needs and Disabilities Information, Advice, and Support) Service in West Sussex provides free, impartial, and confidential advice to parents and young people with special educational needs and disabilities, supporting them in navigating education and career pathways.

<https://westsussexsendias.org>

Brighton & Hove City Council - Amaze SENDIAS service - Amaze's SENDIASS (Special Educational Needs and Disabilities Information, Advice and Support Service) offers free, impartial, and confidential support to parents, carers, and young people with SEND in Brighton & Hove. Their advice line can help with EHCPs, school placements, rights and entitlements, and navigating support services.

<https://www.brighton-hove.gov.uk/directories/special-educational-needs-and-disability-send-support/amaze-sendiass-advice-line>

Information About Support at University for Students with SEND

Disabled Students' Allowance – GOV.UK - Support with study-related costs if you have a disability or health condition.

<https://www.gov.uk/disabled-students-allowance-dsa>

Disabled Students – UCAS - Advice on applying to university, including accessibility, support, and adjustments.

<https://www.ucas.com/applying/applying-university/students-individual-needs/disabled-students>

Scope UK – Support for Disabled Students in Higher Education - Funding and practical advice for students with SEND at university.

<https://www.scope.org.uk/advice-and-support/education/funding-for-college-and-university>

Office for Students – Disabled Students - Research and resources to support inclusive university education.

<https://www.officeforstudents.org.uk/for-students/equal-opportunities/disabled-students/>

**West Sussex,
Brighton and Hove**
CAREERS HUB

THE **CAREERS &
ENTERPRISE**
COMPANY