



King's
School

RET

RUSSELL EDUCATION TRUST



**“Our vision statement is founded
on 1 Corinthians 16:14
“Let all that you do be in love.”
Our core value of love underpins
our approach to all we do in school.”**

Sarah Price, Headteacher

A Warm Welcome to King's School

King's School, an 11-18 secondary school in Brighton and Hove, opened with our very first Year 7 students in September 2013. King's is part of the Russell Education Trust (RET) and enjoys the many benefits of membership of an expert and high-achieving academy group.

King's is an ecumenical Christian school that welcomes all students, regardless of faith background. Our four core values are Love, Forgiveness, Respect and Responsibility; these values permeate everything we do and are evident in the atmosphere and day to day operation of the school. Our vision statement is: “To share God's love and wisdom, and enable our school community to flourish emotionally, academically, and spiritually.”

Our committed and highly skilled staff team provides an outstanding learning environment for our students. We teach a broad and balanced curriculum and our students make excellent progress and achieve very highly in public examinations.

This prospectus should give you a flavour of all the exciting things going on at King's, but we also look forward to welcoming you to our special school to meet our staff and students for yourself.

Sarah Price

Sarah Price
Headteacher





The Power of Experience

King's School is the result of a successful partnership forged between local parents and our academy Sponsor, the Russell Education Trust. RET is an academy trust with five secondary schools, all of which have grown, like King's, from Year 7 upwards. King's benefits enormously from the sharing of good practice and expertise within this very high performing group. Our school was first inspected by OFSTED in June 2015 and was judged good with outstanding Leadership and Behaviour. The school received a further short inspection in December 2018, retaining its good overall rating and being recommended for a full inspection. We were last inspected in March 2022 and retained our overall good rating with outstanding judgements for the personal development of students and students' behaviour and attitudes.

Our Priorities

The priorities of the school are to:

- Nurture a Christian school community in which everyone is known and valued, and our vision statement is realised
- Provide an appropriately broad and balanced curriculum with a focus on high standards which leads to excellent student progress and attainment at all Key Stages
- Maintain our 'small school' ethos and our outstanding pastoral care
- Develop exceptional teachers and support staff



Leadership and Staff

We have a dynamic Senior Leadership Team (SLT) and its teaching and non-teaching members are all committed to our ambitious vision for King's. Our Headteacher, two Deputy Headteachers and three Assistant Headteachers (AHTs) have subject specialisms in English, science, humanities and design technology and all continue to teach a weekly timetable. All our senior leaders have been through rigorous selection processes and the senior leadership team role models effective team work for the rest of the school community. All our teaching and support staff go through a rigorous selection process and all are highly skilled and committed professionals. We ensure that we offer our staff excellent training and development opportunities to enable them to flourish in their careers.

“Our Senior Leadership Team is a model of great servant leadership. However, we believe that everyone at King's is a leader because every student takes responsibility for their own behaviour and learning.”

Sarah Price, Headteacher

“The Christian ethos ensures pupils are kind to one another and look after each other well... Behaviour is exemplary.”

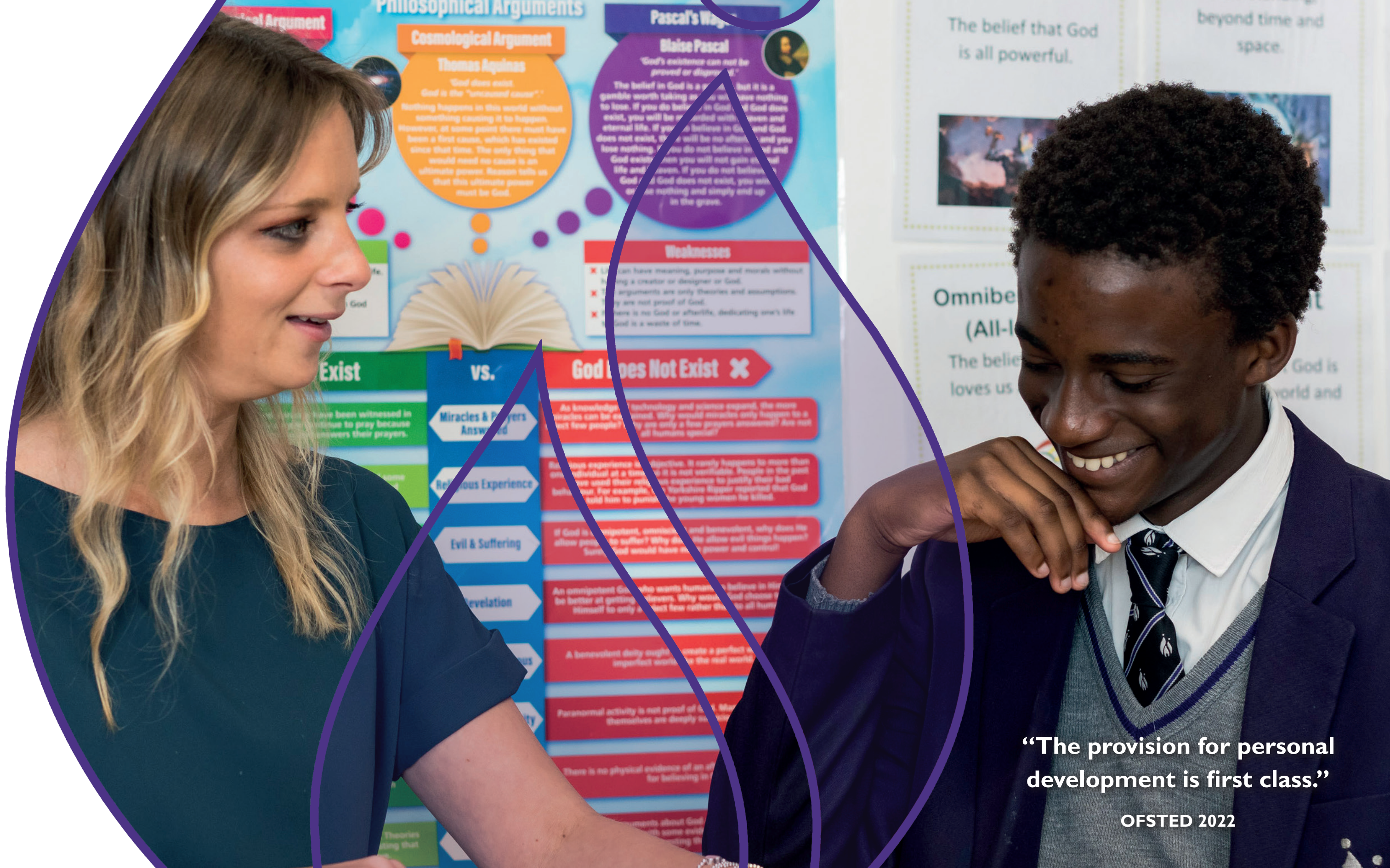
“Pupils are confident, articulate and aspiring. They are proud to be part of the school community.”

OFSTED 2022

Teaching and Pastoral Care

Effective and engaging teaching, which benefits every student, is at the heart of everything we do at King's. There is a strict appointment procedure for our all our teaching staff and only good or outstanding practitioners are appointed. Many of our teachers are also tutors and they therefore play a central role in their tutor group's academic success, through the daily contact with their students and within the cycle of personal target setting and review sessions.

The school's pastoral approach is inextricably intertwined with the Christian ethos of the school and our academic monitoring systems. Progress, both academic and pastoral, is monitored regularly and parents are kept up to date, enabling them to support their child's learning. We take pride in offering outstanding pastoral care to all of our students, recognising that happy students are able to learn and fulfil their academic potential.



“Staff value each pupil and know them well.”

OFSTED 2022

“The provision for personal development is first class.”

OFSTED 2022

Curriculum

Underpinned by our Christian values, King's delivers a high quality, personalised curriculum that draws on best practice from independent and state schools nationally and allows all students to reach their full potential academically. We expect a significant proportion of our students to achieve the English Baccalaureate (between 5 and 9 strong passes at GCSEs including English, maths, science and a language) with a high proportion of the Year 11 group obtaining top grades. We want to foster a love of learning in our students. All students are expected to work hard and to do their very best. This ensures that everyone is an active learner and that lessons are fun and rewarding experiences. Students are also encouraged and supported to develop as independent learners. Homework is compulsory and is essential for exam success. The work set is both appropriate and challenging. Religion and Philosophy is taught in all years (and is a compulsory option at GCSE) so that students' moral and spiritual development is enhanced through both the curriculum and the daily act of collective worship.

In common with other RET schools, the core GCSEs are:

- Mathematics
- English Language and Literature
- Religion and Philosophy (RP)
- Science (including separate Biology, Chemistry and Physics)

Other GCSEs will be available, depending on the needs of the year group, including:

- Art
- Business Studies
- Computer Science
- Drama
- Food and Nutrition
- Geography
- History
- Media Studies
- Modern Foreign Languages (French and Spanish)
- Music
- Physical Education
- Design Technology

“The curriculum is designed to be ambitious and meet the needs of all pupils... Teachers are knowledgeable and enthusiastic.”

OFSTED 2022



Enrichment

Enrichment of the curriculum in and beyond the classroom is an important part of the King's School experience. Three days per academic year are dedicated to enrichment activities and further opportunities run throughout the year.


Off-site enrichment includes field trips and visits to places of interest. Our students have enjoyed a varied programme of off-site visits in recent years including ski trips in Europe; cross-curricular trips to the WWI trenches in Belgium; and day trips to France.

The Arts

Arts education is valued and invested in at King's. We do a whole school production annually and students have numerous opportunities to perform and nurture their skills across the academic year. There are a wide variety of arts clubs, which include choir and instrument ensembles and a drama club. Students have the opportunity to learn and practise a musical instrument, as well as take singing lessons. Our Arts department looks to give students frequent opportunities to experience art exhibitions and music and drama performances in person.

Other Clubs

A Homework Club runs Monday –Thursday after school to enable students to complete work at school under the guidance of teaching staff. Other after school clubs have included the following: Science club; debating club; drama club; and a creative writing club.



“Pupils enjoy an extensive programme of coherently planned extra-curricular activities.”

OFSTED 2022

Extra-Curricular Sports

There is a full programme of sporting activities at King's and our teams compete regularly and successfully against other schools. Our new site is equipped with a brand new sports hall, activity suite, large multi-use hardcourt games areas and full-size grass pitch. Sports that students participate in include: boys' and girls' football; basketball; rugby; netball; hockey; athletics; cross-country; rounders; handball and cricket. We hold an annual Sports' Day where students compete to earn points for their houses: Berea, Colossae, Ephesus, Galatia, Philippi and Rome.

Partnership and Service

We work in close partnership with other schools in Brighton and Hove; and the local family of churches and church schools. We are proud to be affiliated to the Church of England, through the Diocese of Chichester. All students are encouraged to have some involvement in community service (including service to a local institution, church or charity) during their time at school. We actively support charities throughout the school year, with many students organising their own events. At school level, our most important partnerships are with parents. We work together with you to promote your child's happiness, academic success and personal growth.

If you would like to visit the school or find out how to apply, please visit our website: www.kingschoolhove.org.uk

We look forward to welcoming you to King's School.





The Russell Education Trust (RET) is made up of five high-performing 11-18 secondary schools in the south of England. Member schools work together and with RET expert advisers to deliver the very highest standards of teaching and learning; and to support the achievement and happiness of every student across the Trust. The success of the Trust's schools has been recognised by Ofsted, the Department for Education, and by the communities they serve.



Bristol Free School
Leaders have ensured that the curriculum is engaging for pupils, and that it promotes diversity. Teachers have strong subject knowledge, know their pupils well, and use this knowledge to help them learn. Pupils behave well. There is rarely any disruption to learning.
Ofsted 2022



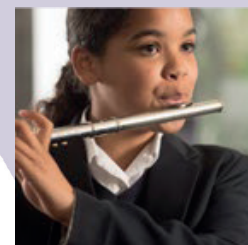
Becket Keys Church of England School
The headteacher's inspired leadership has quickly established a vibrant, orderly community which enables students to thrive. He ensures that a family atmosphere is fostered across the school in which all students feel cared for, and valued.
Ofsted 2014



St Andrew The Apostle School
The religious ethos in the school provides a strong base for the support of pupils' personal development and welfare. Pupils speak with pride about their school and relationships in the school.
Ofsted 2018



Turing House School
The school has many strengths. Leaders have established an open culture at the school where there is a clear sense of teamwork and community across staff and pupils alike. Everyone takes pride in the school. It is a welcoming and vibrant place.
Ofsted 2014



King's School

King's School
Hangleton Way
BN3 8BN

01273 840004
www.kingsschoolhove.org.uk
admin@kingsschoolhove.org.uk

